

Swindon Young Musicians Club

Subscription Fees receive a discount of 60% on as follows:

- Families who receive Income Support or Income-Based Job Seeker's Allowance.
- Families who receive Child Tax Credit and have an annual taxable income, as assessed by the Inland Revenue that does not exceed £16,190.
- Families who receive the guaranteed element of State Pension Credit.
- Families who receive support under part VI of the Immigration & Asylum Act 1999
- Pupils in year groups reception to year 11 recorded as Ever 6 service child or in receipt of a child pension from the Ministry of Defence

Subscription Fees receive a discount of 100% as follows:

- Looked-after children (LAC) defined in the Children Act 1989 as one who is in the care of, or provided with accommodation by an English local authority, or
- Children who have ceased to be looked after by a local authority in England and Wales because of adoption, a special guardianship order, or child arrangements order (previously known as a residence order)

“ Access for all -
Turning Challenges
into Opportunities ”

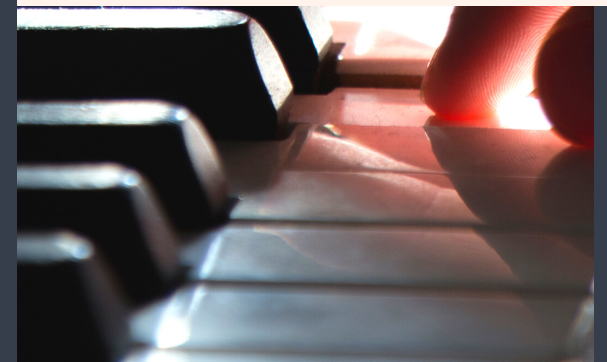
Contact Us

07395 887 190
Swindon Music Service
Faringdon Road
Swindon
SN1 5BJ
pclark@smscio.co.uk
www.smscio.org



Swindon Music Service

Policy for Remission
on fees for
Instrumental
lessons and SYM
membership
Subscriptions



SMS Remissions Policy for Instrumental lessons

Arts Council England funding for the academic year 2021-22 has enabled Swindon Music Service to extend its Remissions Policy for a further year. This includes pupils attending instrumental lessons in Swindon schools and at Swindon Young Musicians.

Schools Applications

If a school is buying a block of time to assist with instrumental/vocal tuition through the Service Level Agreement (SLA) process, schools will be able to access the Remission Grant directly and can supplement their Pupil Premium funding to assist with pupils' lessons. The benefit of schools buying in blocks of time through the SLA approach will see their pupils receive a free loan of a musical instrument for the duration of the buy-in period.

Continued remission fees being granted is dependent on regular attendance at lessons.

Parent Applications

Swindon Music Service is unable to guarantee remissions for all pupils in need as there is a limited budget available for the academic year 2021/2022. Therefore, schools may wish to encourage parents to make their remission application to SMS promptly.

Pupils must attend lessons with a Swindon Music Service tutor during the school day. This can be either an individual or group lesson depending on the needs of the pupil. All applications must be received by Swindon Music Service Music and fees paid before lessons can start.

Tuition in Schools - that attracts Remissions

- The following categories (where schools are hosting lessons) attract remission:
- Pupils in year groups reception to year 6 recorded as Ever 6 free school meals (FSM) due to financial hardship.
- Pupils in years 7 to 11 recorded as Ever 6 FSM.
- Pupils in year groups reception to year 11 recorded as Ever 6 service child or in receipt of a child pension from the Ministry of Defence.
- Pupils categorised as SEND.

All categories listed above can receive a reduction of fees for first choice lessons:

- 20 minute individual lessons: 60% discount on the fees.
- 30-minute paired lessons: 60% discount on the fees (subject to two learners being available on the same instrument).
- Instrument hire costs: 60% discount

- Looked-after children (LAC) defined in the Children Act 1989 as one who is in the care of, or provided with accommodation by an English local authority
- Children who have ceased to be looked after by a local authority in England and Wales because of adoption, a special guardianship order, or child arrangements order (previously known as a residence order)

LAC reduction of fees for first choice lessons. Pupils also get free attendance at Swindon Young Musicians club as a part of this agreement:

- 20-minute individual lessons: 100% discount on fees - free tuition (not available for multiple instrument lessons). Instrument hire costs:
- 100% discount (Free hire).

Remissions only apply to lessons on one instrument per child

LAC children have the opportunity to take up free membership of SYM

Tuition in schools through the parent direct Pay scheme or Out-of-School Tuition at Swindon Music Centre

Fees receive a discount of 60% on fees as follows:

- Families who receive Income Support or Income-Based Job Seeker's Allowance.
- Families who receive Child Tax Credit and have an annual taxable income, as assessed by the Inland Revenue that does not exceed £16,190.
- Families who receive the guaranteed element of State Pension Credit.
- Families who receive support under part VI of the Immigration & Asylum Act 1999.
- Pupils in year groups reception to year 11 recorded as Ever 6 service child or in receipt of a child pension from the Ministry of Defence

A reduction of fees for first choice lessons (not available for multiple instrument lessons):

- 20 minute individual lessons: 60% discount.
- 30-minute paired lessons: 60% discount on the fees (subject to two learners being available on the same instrument).
- Instrument hire costs: 60% discount

Fees receive a discount of 100% on fees as follows:

- Looked-after children (LAC) defined in the Children Act 1989 as one who is in the care of, or provided with accommodation by an English local authority or,
- Children who have ceased to be looked after by a local authority in England and Wales because of adoption, a special guardianship order, or child arrangements order (previously known as a residence order)

A reduction of fees for first choice lessons (not available for multiple instrument lessons):

- 20-minute individual lessons: 100% discount on fees - free tuition (not available for multiple instrument lessons).
- Instrument hire costs 100% discount (Free hire).